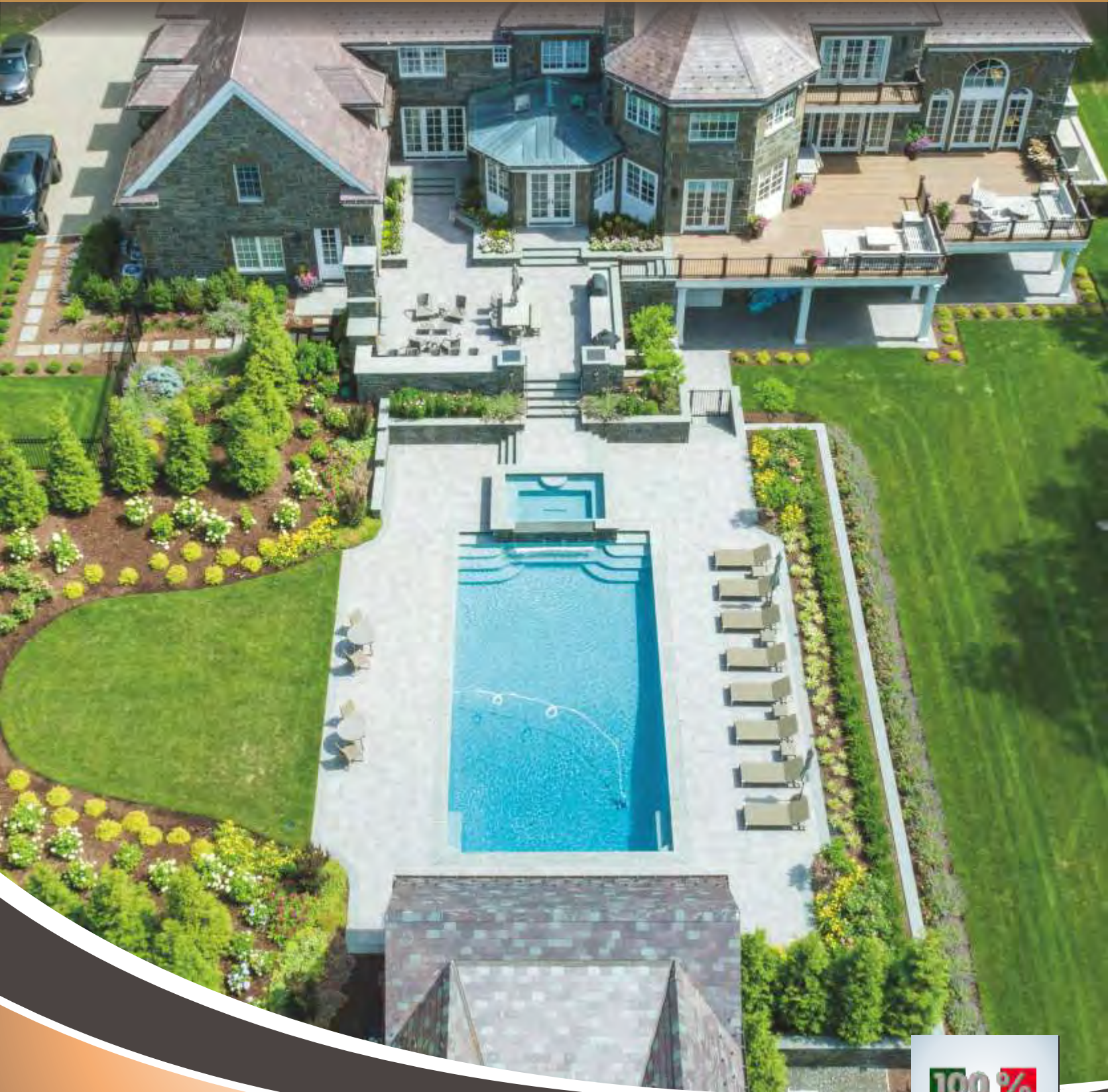




# ELEGANCE

OUTDOOR PORCELAIN 2022 COLLECTION



100%  
MADE IN ITALY



OUTDOOR SPIRIT,  
RESISTANCE AND VERSATILITY:  
THESE ARE JUST A FEW OF THE FEATURES  
OF 20 MM THICK PORCELAIN  
STONEWARE.

PORCELAIN 2CM PAVER is ideal for public and private outdoor flooring and stands out for its exceptional technical performance.

A perfectly square and monocaliber porcelain stoneware slab with a 20 mm thickness that features surface finishes with high antislip performance (R11 A+B+C), with a wide range of special pieces that create visual continuity between indoor and outdoor spaces, making them perfect for swimming pools and wellness centres.



Moon 20"x40" Paver



# BENEFITS



HIGH RESISTANCE TO BREAKING LOADS AND STRESS



HIGH NON-SLIP PERFORMANCE: R11 A+B+C



EASY TO CLEAN



HIGH RESISTANCE TO FROST AND FIRE



EASY TO INSTALL, REMOVE AND REPOSITION \*



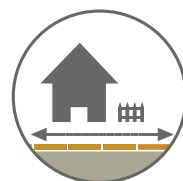
RESISTANCE TO THE WEATHERING ELEMENTS AND THERMAL SHOCK



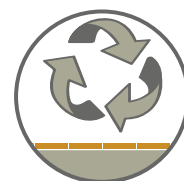
RESISTANCE TO SALT AND INALTERABILITY OVER TIME



RESISTANT TO ACIDS



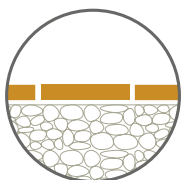
PERFECT CONTINUITY BETWEEN INDOOR AND OUTDOOR AREAS



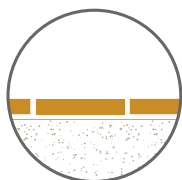
REUSABLE

□ IT DOES NOT REQUIRE A SPECIALIZED TILE LAYER (IN CASE OF DRY INSTALLATION) NEITHER THE USE OF GLUES AND GROUTS (IN CASE OF DRY OR RAISED INSTALLATION)

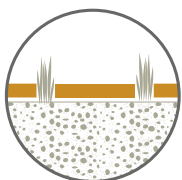
# INSTALLATION SOLUTIONS



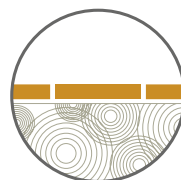
DRY INSTALLATION ON GRAVEL



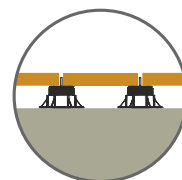
DRY INSTALLATION ON SAND



DRY INSTALLATION ON GRASS



TRADITIONAL INSTALLATION ON SCREEDS



RAISED INSTALLATION ON SUPPORTS



# INTENDED USES

PORCELAIN 2CM PAVER'S MAIN FEATURES MAKE IT THE IDEAL SOLUTION FOR ANY TYPE OF PUBLIC AND PRIVATE

OUTDOOR FLOORING. PORCELAIN 2CM PAVER REPRESENTS THE BEST SOLUTION FOR:

- WALKWAYS IN GARDENS OR ON BEACHES
- TERRACES AND BALCONIES

- PATIOS, COURTYARDS, SWIMMING POOL EDGES, AND WELLNESS CENTRES
- DRIVE-OVER PATHWAYS



# COLORS

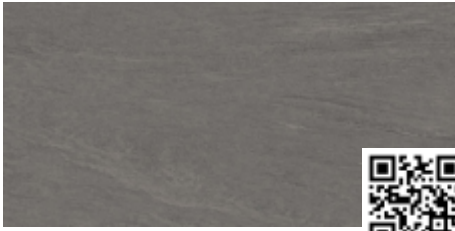
# 20"X40"

WHITE



20"x40"

SMOKEY



20"x40"

MOON



20"x40"

DESERT



20"x40"

DUST



20"x40"

DARK



20"x40"

SUNSET



20"x40"

ALPINE



20"x40"

SAND



20"x40"

SILVER



20"x40"

MARS



20"x40"

MINERAL



20"x40"

FOSSIL



20"x40"



WHITE



ALPINE





**SMOKEY**



**MOON**





DUST



SAND



# COLORS

# MODULAR PATTERN 4 SIZES

## ASH RECTIFIED



18"x36"



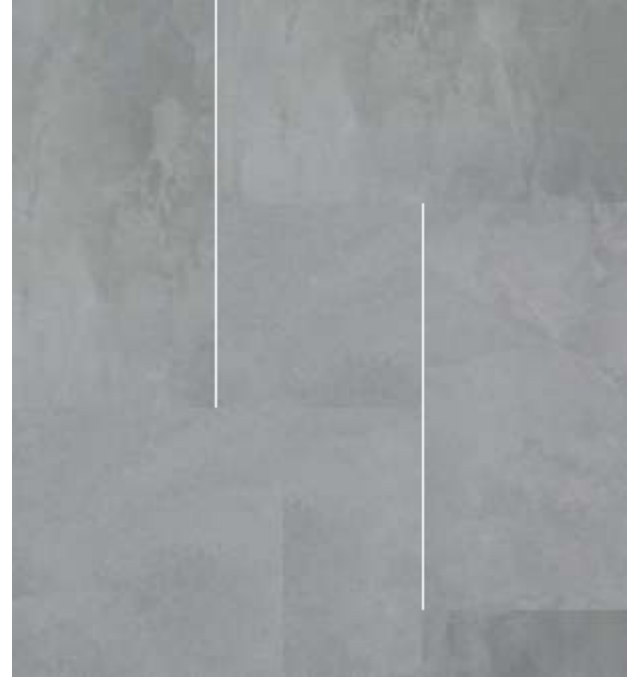
18"x18"



24"x24"



12"x24"



Modular Pattern

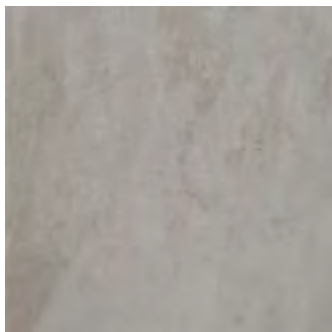
## SANDSTONE RECTIFIED



18"x36"



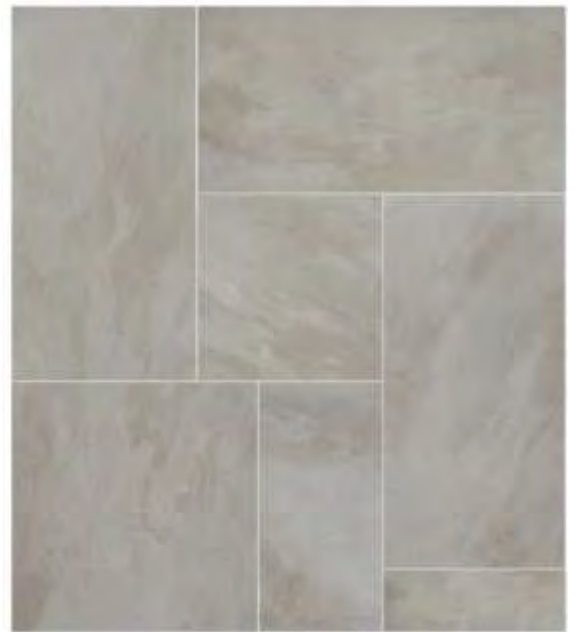
18"x18"



24"x24"



12"x24"



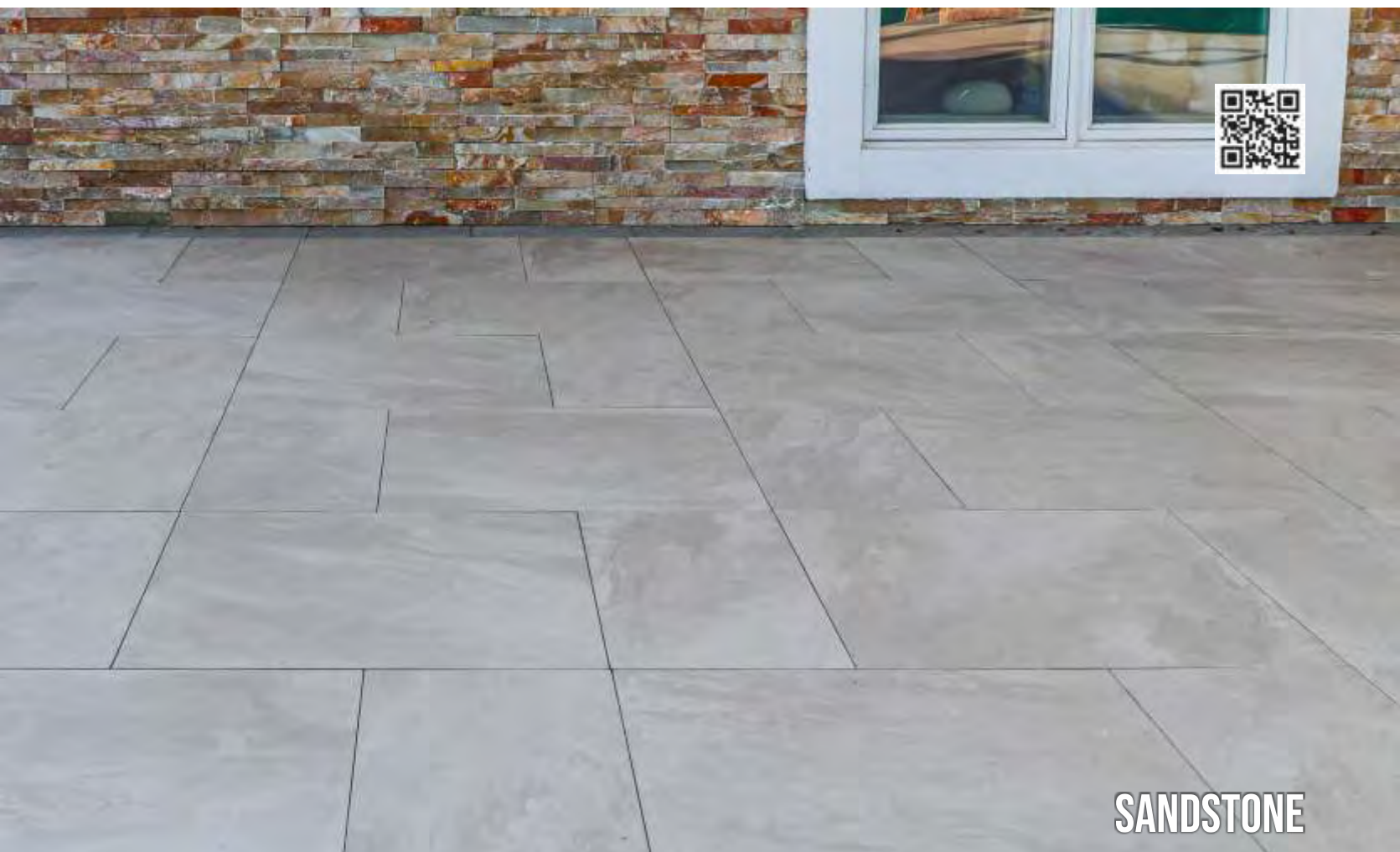
Modular Pattern







ASH



SANDSTONE



## METAL RECTIFIED



18"x36"



18"x18"



24"x24"



12"x24"



Modular Pattern

## COAL RECTIFIED



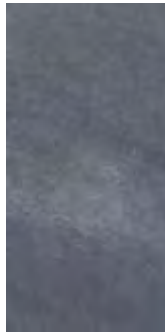
18"x36"



18"x18"



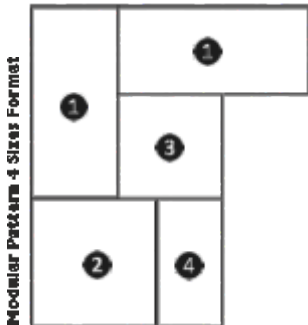
24"x24"



12"x24"



Modular Pattern

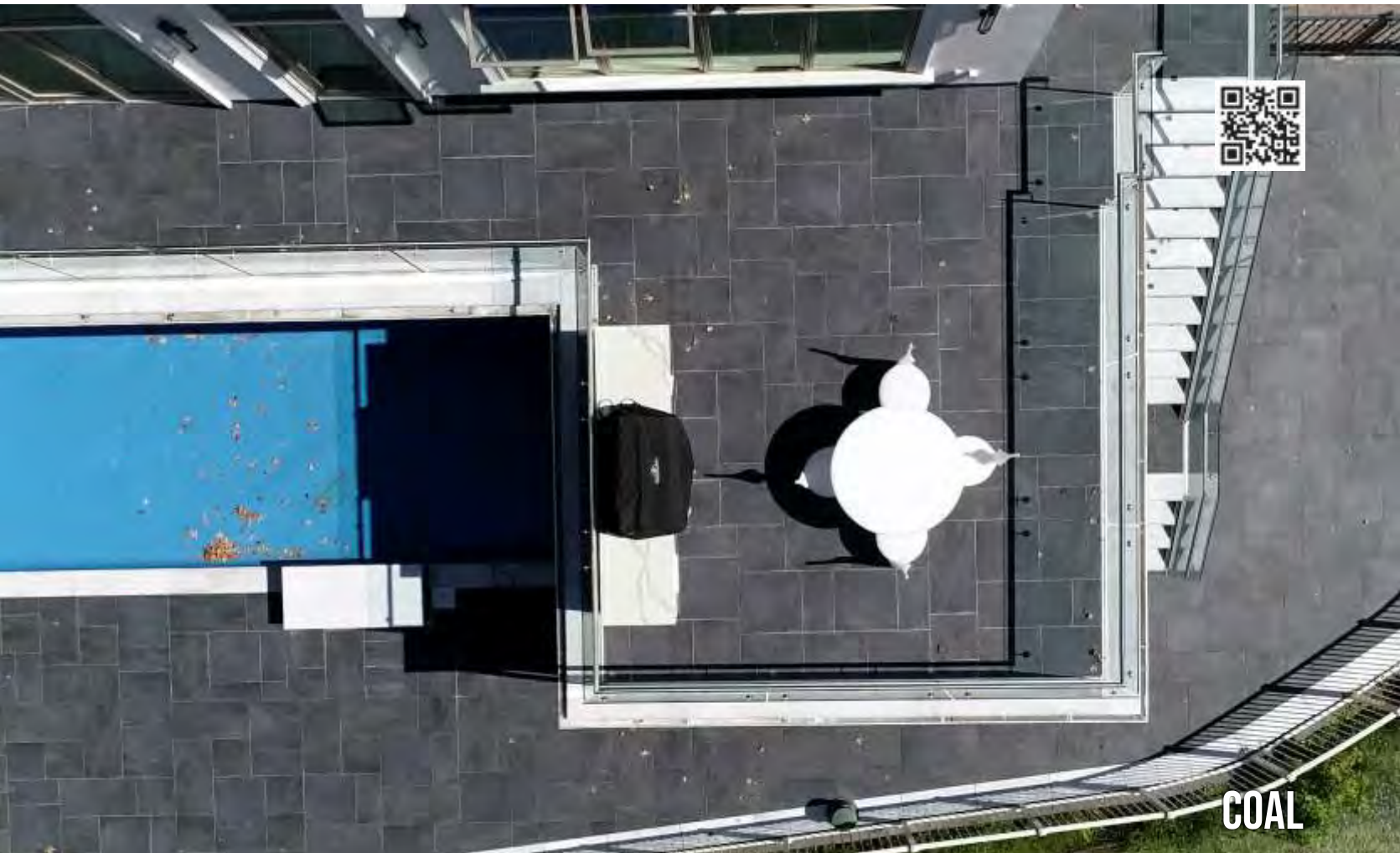


### Modular Pattern 4 Sizes - 1 set include:

- ① 18"x36"x3/4" (2pcs) = 52.17%
- ② 24"x24"x3/4" (1pc) = 23.18%
- ③ 18"x18"x3/4" (1pc) = 13.04%
- ④ 12"x24"x3/4" (1pc) = 11.60%



METAL



COAL



# COLORS

# 24"X24"

**PHILLY GRAY**



24"x24"

**PHILLY TAUPE**



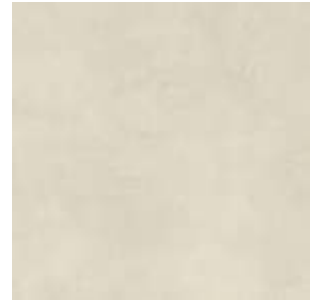
24"x24"

**PHILLY BEIGE**



24"x24"

**PHILLY WHITE**



24"x24"

**ASH**



24"x24"

**METAL**



24"x24"

**COAL**



24"x24"

**SANDSTONE**



24"x24"

**CARAMEL**



24"x24"

**HONEY**



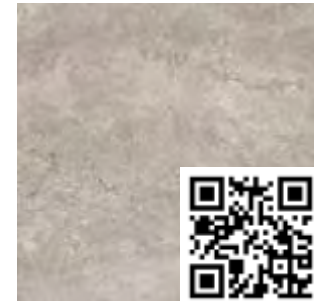
24"x24"

**MILK**



24"x24"

**STORM**



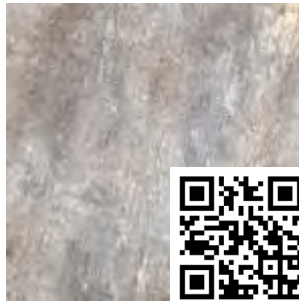
24"x24"

**PIETRA GREY**



24"x24"

**RUSTIC GRIGIO**



24"x24"

**SOFT CREAM**



24"x24"

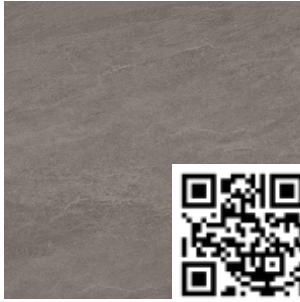
**LIGHT GREY**



24"x24"



**DARK GREY**



24"x24"



**BLUESTONE**



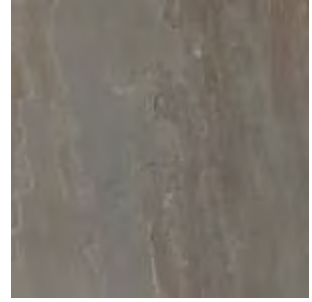
24"x24"

**POCONO**



24"x24"

**FORGE**



24"x24"



**METAL**





**RUSTIC GRIGIO**



**MILK**



**SOFT CREAM & SUNSET**

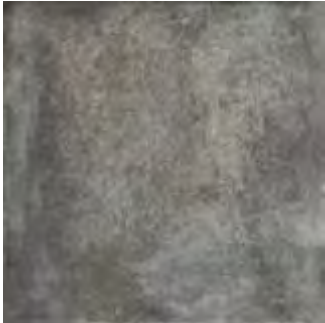


**STORM**



# COLORS CEMENT LOOK 32"X32"

**ANTRACITE**



Rectified 32"x32"

**AVORIO**



Rectified 32"x32"

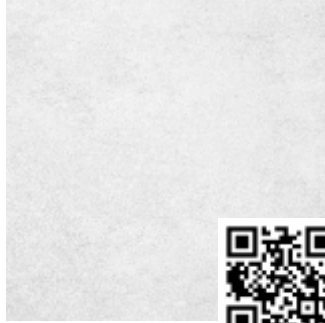


**GRIGIO**



Rectified 32"x32"

**INOX**



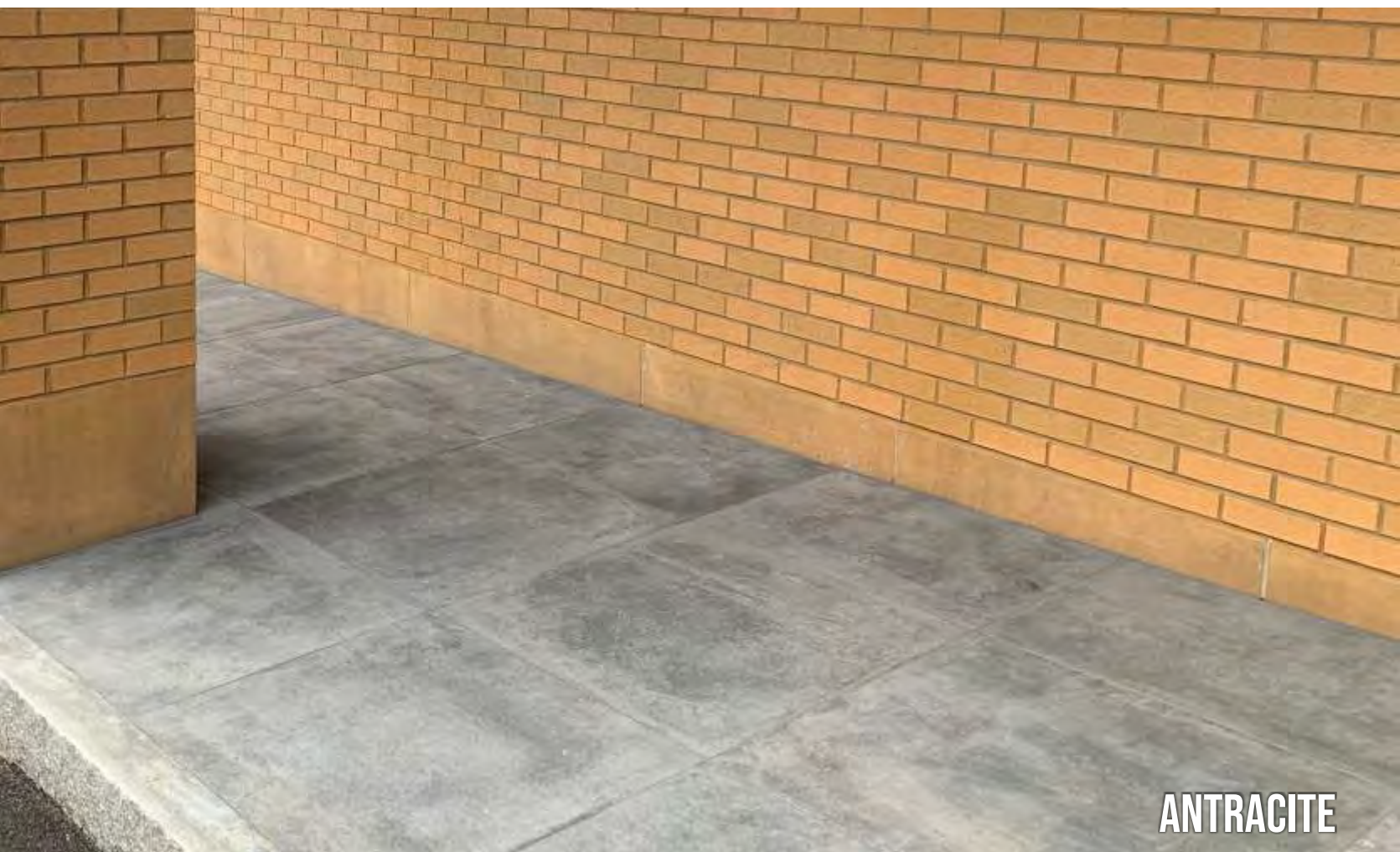
**AVORIO** 32"X32"







**INOX**



**ANTRACITE**



# COLORS

# WOODTIME

## CARPINO

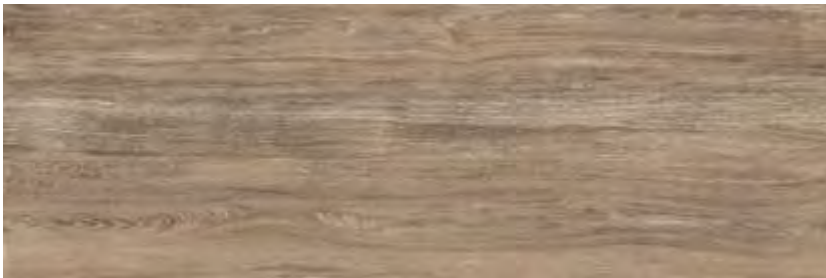


16"x48"



8"x48"

## ROVERE IMPERO

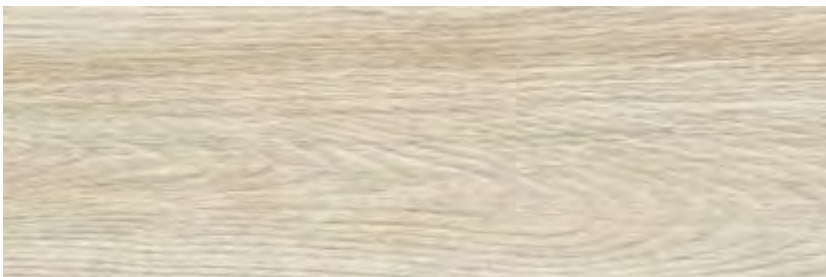


16"x48"

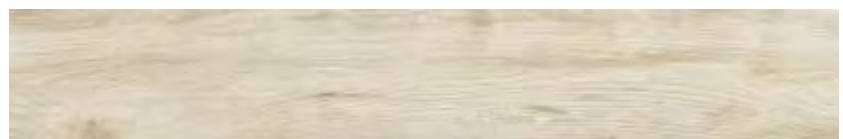


8"x48"

## ROVERE SABBIA



16"x48"

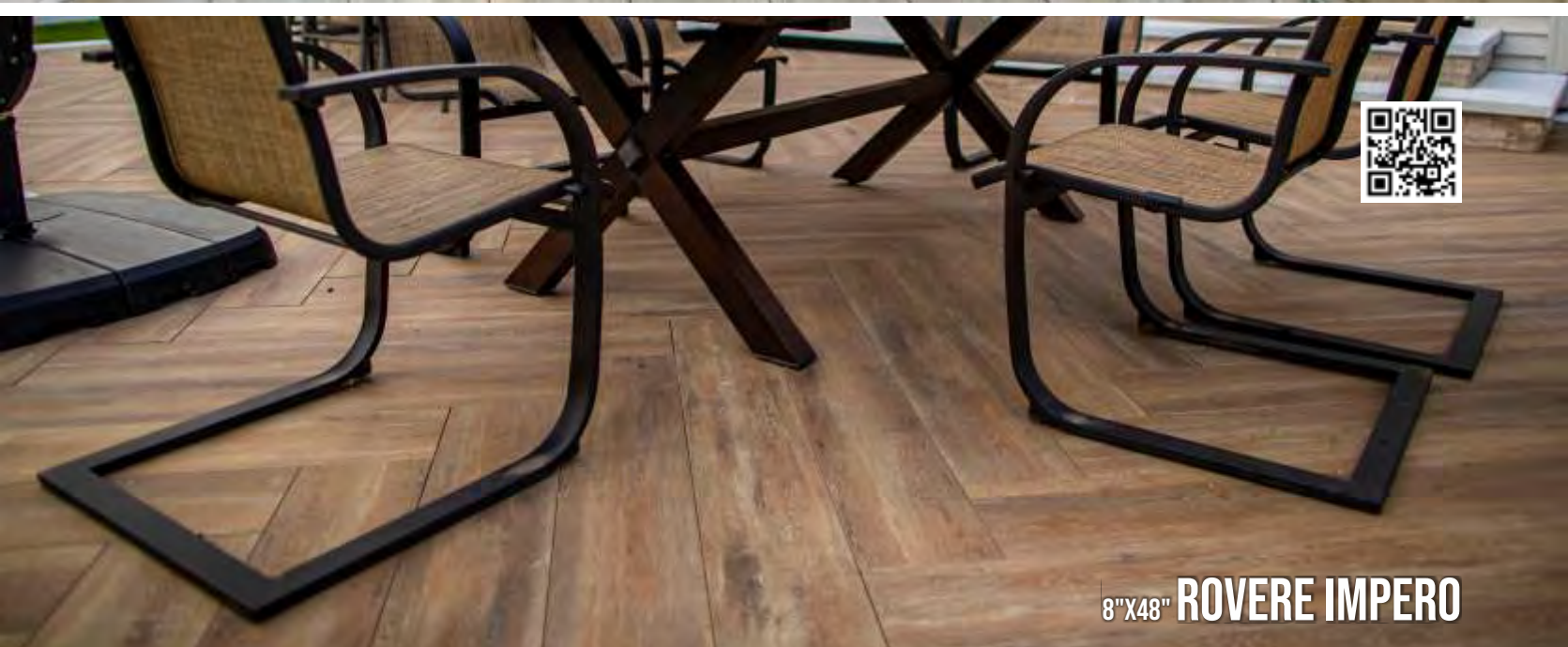


8"x48"





8"X48" SABBIA



8"X48" ROVERE IMPERO



8"X48" CARPINO



# COLORS

# MODULAR PATTERN 3 SIZES

## DARK GREY



12"x24"



24"x24"



24"x36"



Modular Pattern

## LIGHT GREY



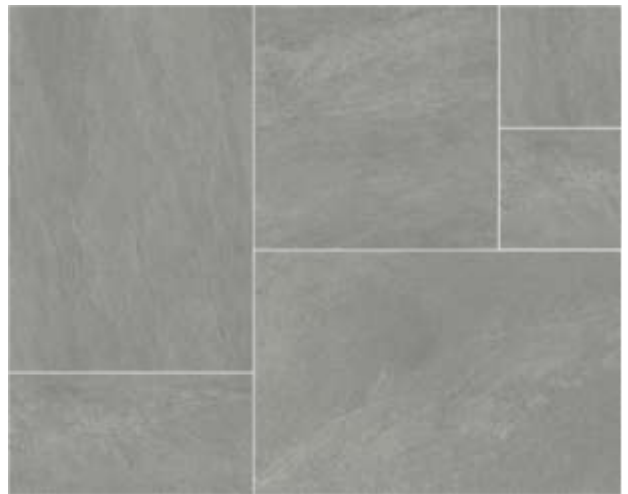
12"x24"



24"x24"



24"x36"



Modular Pattern

### Modular Pattern 3 Sizes - 1 set is 18 sq ft:

- ❶ 24"x36"x3/4" (2pcs) = 66.67%
- ❷ 24"x24"x3/4" (1pc) = 22.22%
- ❸ 12"x24"x3/4" (1pc) = 11.11%



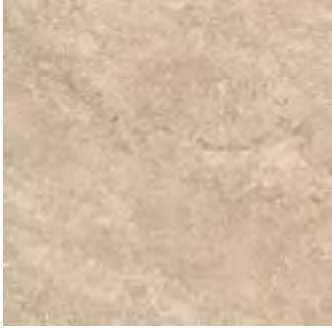
# COLORS

# MODULAR PATTERN 3 SIZES

## CARAMEL



12"x24"



24"x24"



24"x36"



Modular Pattern



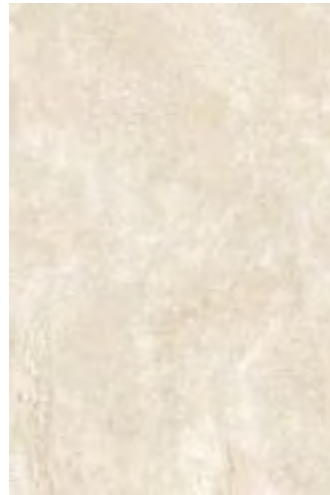
## HONEY



12"x24"



24"x24"



24"x36"



Modular Pattern



### Modular Pattern 3 Sizes - 1 set is 18 sq ft:

- ① 24"x36"x3/4" (2pcs) = 66.67%
- ② 24"x24"x3/4" (1pc) = 22.22%
- ③ 12"x24"x3/4" (1pc) = 11.11%



# COLORS

# MODULAR PATTERN 3 SIZES

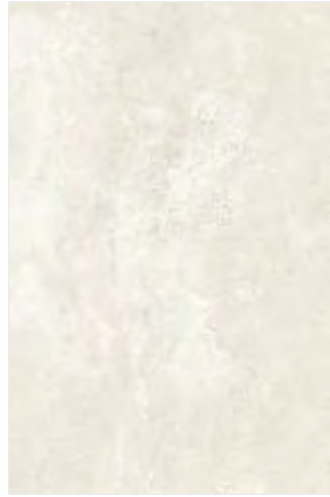
## MILK



12"x24"



24"x24"



24"x36"

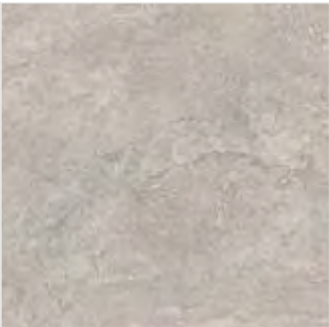


Modular Pattern

## STORM



12"x24"



24"x24"



24"x36"



Modular Pattern



### Modular Pattern 3 Sizes - 1 set is 18 sq ft:

- ❶ 24"x36"x3/4" (2pcs) = 66.67%
- ❷ 24"x24"x3/4" (1pc) = 22.22%
- ❸ 12"x24"x3/4" (1pc) = 11.11%

Modular Pattern 3 Sizes Format



# COLORS

# MODULAR PATTERN 3 SIZES

## BLUESTONE



12"x24"



24"x24"



24"x36"



Modular Pattern



**BLUESTONE**





HONEY



CARAMEL







**STORM PORCELAIN PAVER IN MODULAR PATTERN**



**STORM**



# COLORS

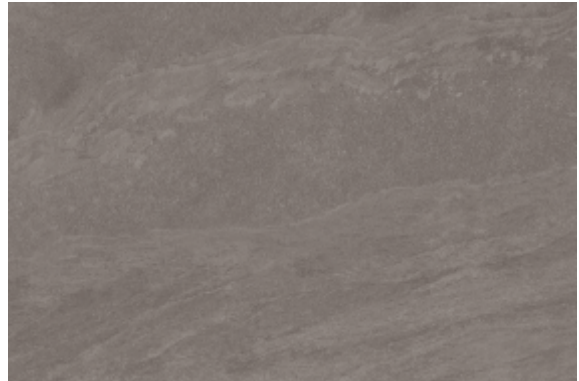
# 24"X36"

**LIGHT GREY**



24"X36"

**DARK GREY**



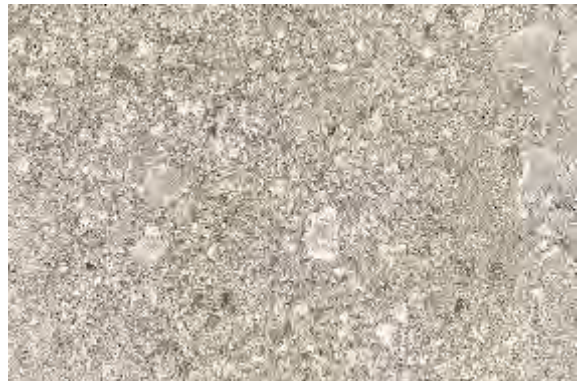
24"X36"

**TERRAZZO BIANCO**



24"X36"

**TERRAZZO GRIGIO**



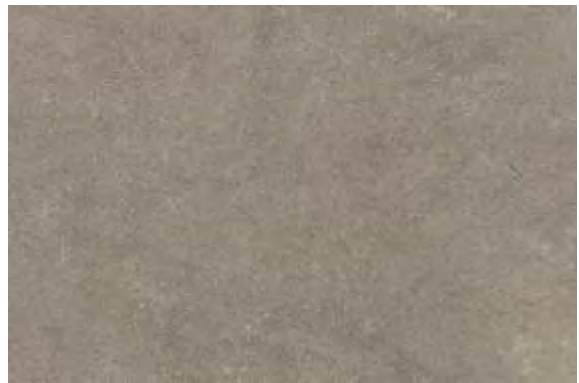
24"X36"

**TERRAZZO NOCE**



24"X36"

**BLUESTONE**



24"X36"



**LIGHT GREY**



**TERRAZZO GRIGIO**



# PORCELAIN COPINGS

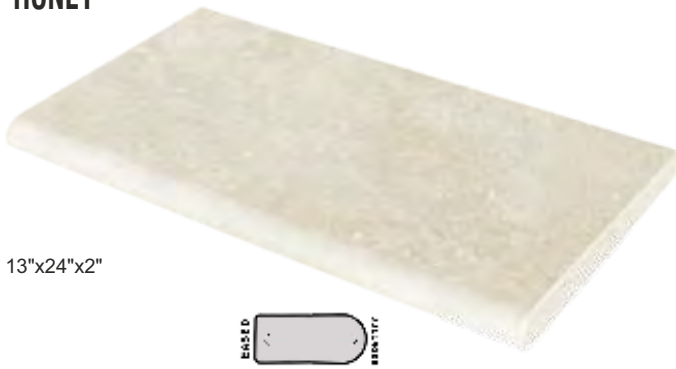
**DARK GREY**



**LIGHT GREY**



**HONEY**



**MILK**

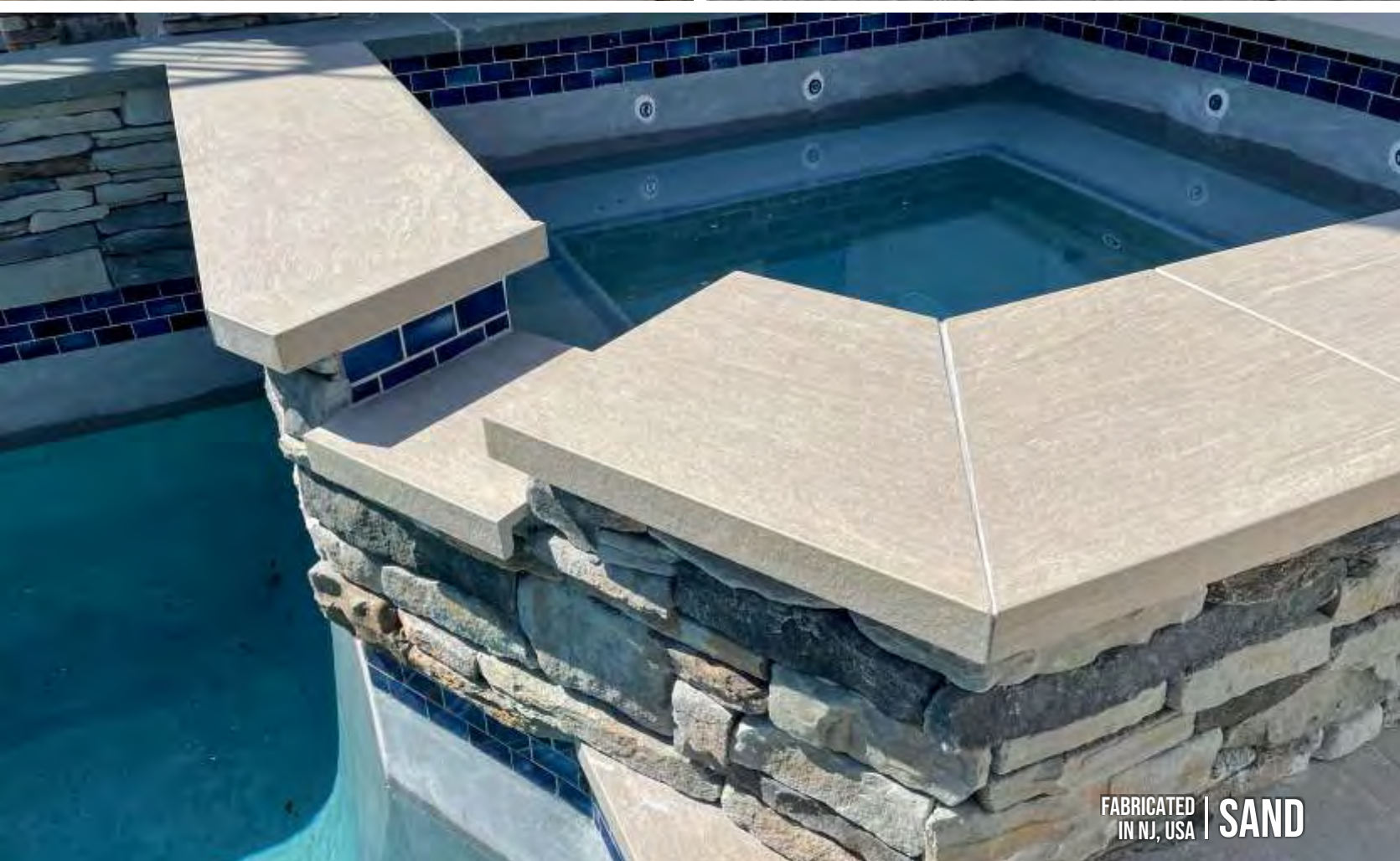




IN STOCK  
**DARK GREY**



IN STOCK  
**LIGHT GREY**



FABRICATED  
IN NJ, USA | **SAND**



# 24"X48"

**LIGHT GREY**



**DARK GREY**



**HONEY**



**MILK**



**CARAMEL**



**STORM**



**PHILLY TAUPE**



**PHILLY WHITE**



**PHILLY GREY**



**PHILLY BEIGE**



**ROMANTIC GREY**



**ROMANTIC BEIGE**



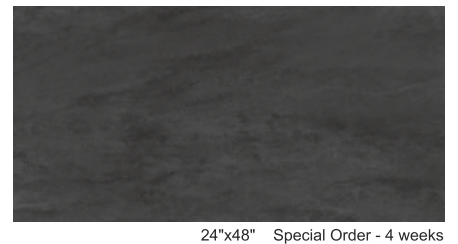
**ROMANTIC WHITE**



**TAUPE**



**SLATE**





**DARK GREY**



**CARMEL**



# 24"X72"

**DARK GREY**



24"x72"

**LIGHT GREY**



24"x72"



**LIGHT GREY**







24"X72" LIGHT GREY



24"X72" DARK GREY



# 48"X48"

**VOLCANO GREY** IN STOCK



48"x48"



**ASPEN WHITE** IN STOCK



48"x48"

**ANTIQUE SAND** SPECIAL ORDER



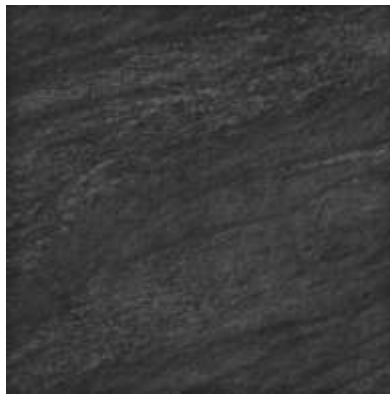
48"x48"

**ANTIQUE EARTH** SPECIAL ORDER



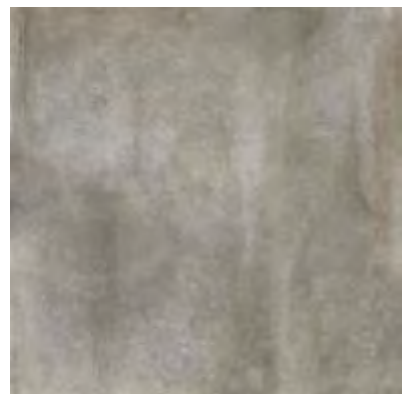
48"x48"

**VOLCANO BLACK** SPECIAL ORDER



48"x48"

**ANTIQUE GREY** SPECIAL ORDER



48"x48"

**CORTEN** SPECIAL ORDER



48"x48"





**VOLCANO GREY**



**ASPEN WHITE**



# 3CM PORCELAIN PAVERS

## BLUESTONE DARK



16"x32" - **IN STOCK**,  
24"x24"



## BLUESTONE GREY



16"x32" - **IN STOCK**,  
24"x24", 36"x36"



## PIETRA BARGE



16"x32" - **IN STOCK**,  
24"x24"

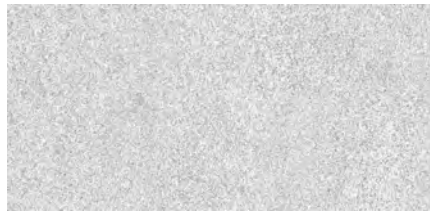


## GRANITO DIORITE



16"x32"

## GRANITO MONTORFANO



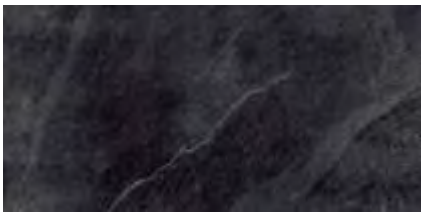
16"x16", 16"x32", 24"x24", 16"x48"

## ZERMATT CHIARO



16"x32"

## SLATE BLACK



16"x32", 24"x24"

## SLATE GREY



16"x32", 24"x24"

## PIETRA BASALTO



16"x32", 24"x24", 36"x36"

## PIETRA ANTRAZYT



16"x32"

## PIETRA GREY



16"x32"

## ZERMATT SCURO



16"x32"

# PIETRA OMBRA



16"x32", 24"x24"

# PIETRA GRIGIONI



16"x32", 24"x24"

# FORESTA SCURO



16"x32"

# FORESTA CHIARO



16"x32"



**BLUESTONE GREY**





**BLUESTONE DARK**



**BLUESTONE DARK**





PIETRA BARGE



PIETRA BARGE



# PORCELAIN VENEER

**AVORIO**



8"x24"

**BEIGE**



8"x24"

**BROWN**



8"x24"

**GRIGIO**



8"x24"



**CORNER**



**GRIGIO**





# CLAY 3D PORCELAIN LEDGER

**BEIGE**



6"x8"x4"

**TAUPE**



6"x8"x4"

**WHITE**



6"x8"x4"



6"x24"



6"x24"



6"x24"

**GREY**



6"x8"x4"

**DARK**



6"x8"x4"

**INSIDE CORNER**



6"x8"x4"

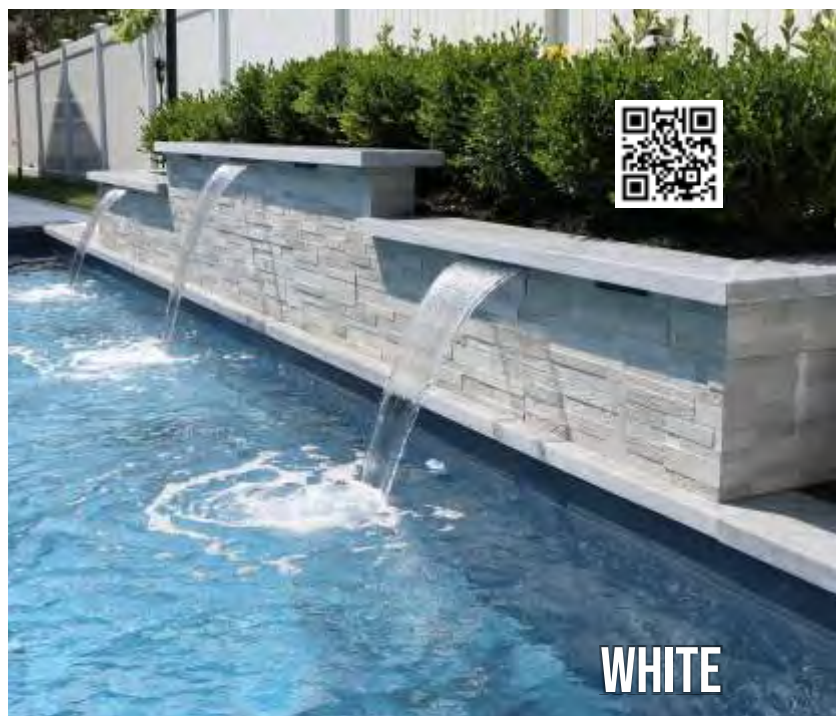
**SPECIAL ORDER**



6"x24"



6"x24"

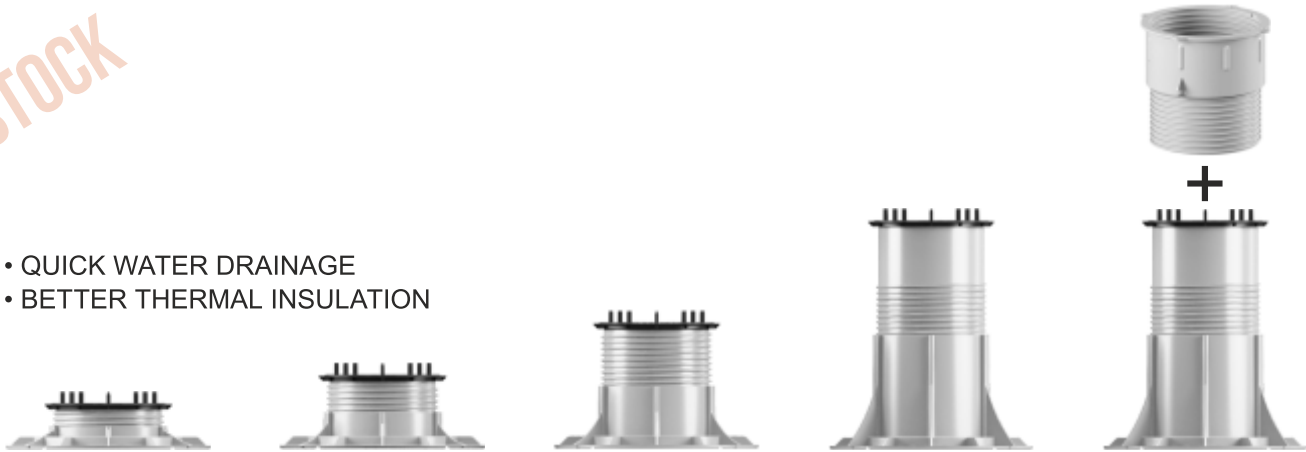


# EQ PEDESTALS



IN-STOCK

- QUICK WATER DRAINAGE
- BETTER THERMAL INSULATION



HEIGHT	<b>EQ3</b>	<b>EQ4</b>	<b>EQ5</b>	<b>EQ6</b>	<b>EQ7</b>
	1 1/7" - 1 3/4"	1 2/3" - 2 5/6"	2 3/4" - 5"	4 7/8" - 9 2/9"	7 1/4" - 13 5/9"

## ACCESSORY



EQ Key



EQ Lucky Shims



Red EQ Slope Adjuster

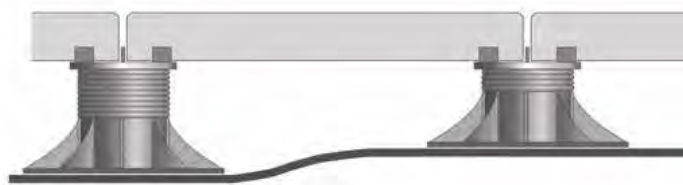
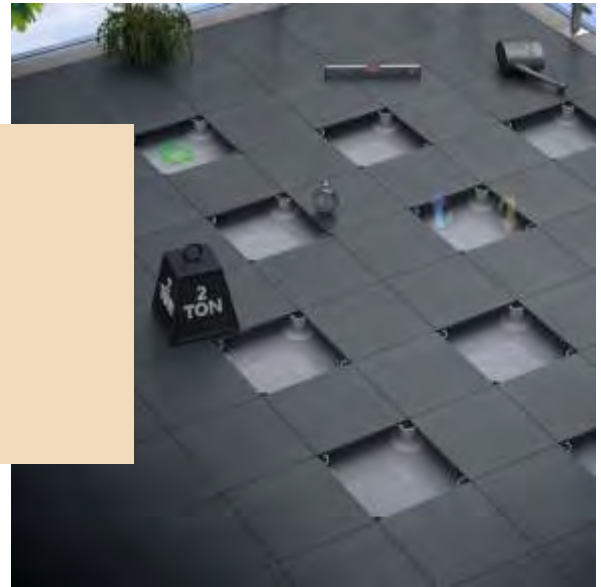


# EQ PEDESTALS

100%  
MADE IN ITALY

## ADVANTAGES:

- EASY INSTALLATION
- EXCELLENT FOR HIDING AND EQUIPMENT
- ALWAYS A FLAT PAVING AND EASILY ACCESSIBLE
- EXCELLENT ABSORPTION OF STRUCTURAL MOVEMENT
- BETTER ACOUSTIC INSULATION
- HIGHLY RESISTANCE
- SIGNIFICANT LESS WEIGHT



# ADJUSTABLE PAVER PEDESTALS

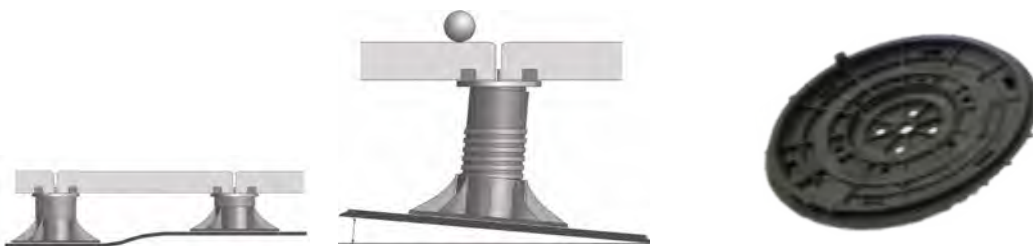
## ADVANTAGES:

- EASY INSTALLATION
- EXCELLENT FOR HIDING AND EQUIPMENT
- ALWAYS A FLAT PAVING AND EASILY ACCESSIBLE
- EXCELLENT ABSORPTION OF STRUCTURAL MOVEMENT
- BETTER ACOUSTIC INSULATION
- HIGHLY RESISTANCE
- SIGNIFICANT LESS WEIGHT
- QUICK WATER DRAINAGE
- BETTER THERMAL INSULATION

IN-STOCK



	E3	E4	E5	E6	E6.5	E7
HEIGHT	1 1/8" - 1 5/8"	1 9/16" - 2 9/16"	2 3/8" - 4 1/8"	3 1/2" - 7"	7 1/2" - 11"	7" - 12 5/8"
COMPOSITION	1 base + 1 head (72 pcs/bx) 1 Spacer Tab (400 pcs/bx) 1 Shim (500 pcs/bx)	1 base + 1 head (54 pcs/bx) 1 Spacer Tab (400 pcs/bx) 1 Shim (500 pcs/bx)	1 base + 1 head (48 pcs/bx) 1 Spacer Tab (400 pcs/bx) 1 Shim (500 pcs/bx)	1 base + 1 head (40 pcs/bx) 1 Spacer Tab (400 pcs/bx) 1 Shim (500 pcs/bx)	1 base (48 pcs/bx) 1 head (36 pcs/bx) 1 Spacer Tab (400 pcs/bx) 1 Shim (500 pcs/bx)	1 base (48 pcs/bx) 1 extender (60 pcs/bx) 1 head (72 pcs/bx) 1 Spacer Tab (400 pcs/bx) 1 Shim (500 pcs/bx)



PEDCORRECTOR -  
Base slope corrector  
(0%-5% slope adjustable)



# ADJUSTABLE PAVER PEDESTALS



**BEFORE**



**AFTER**

**ADJUSTABLE HEIGHT:**

We have a solution height from 1/8" to 50".

**MATERIAL:**

Polypropylene(PP), material thickness 4.5mm-6mm;  
Composition 90% PP, 10% talc, UV and black masterbatch  
100% recyclable

**DIMENSIONS:**

Head=diameter 5 7/8" - surface area 27.28 sq.inch  
Base=diameter 7 7/8" - ground surface 48.83 sq.inch  
Extender-extender diameter 4 3/4" - adjustable height

**PERFORMANCE:**

Resisting UV rays, weather, sea salt and almost all chemicals.  
Temperature range: -40°F to +248°F (-40°C to +120°C).

**APPLICATION:**

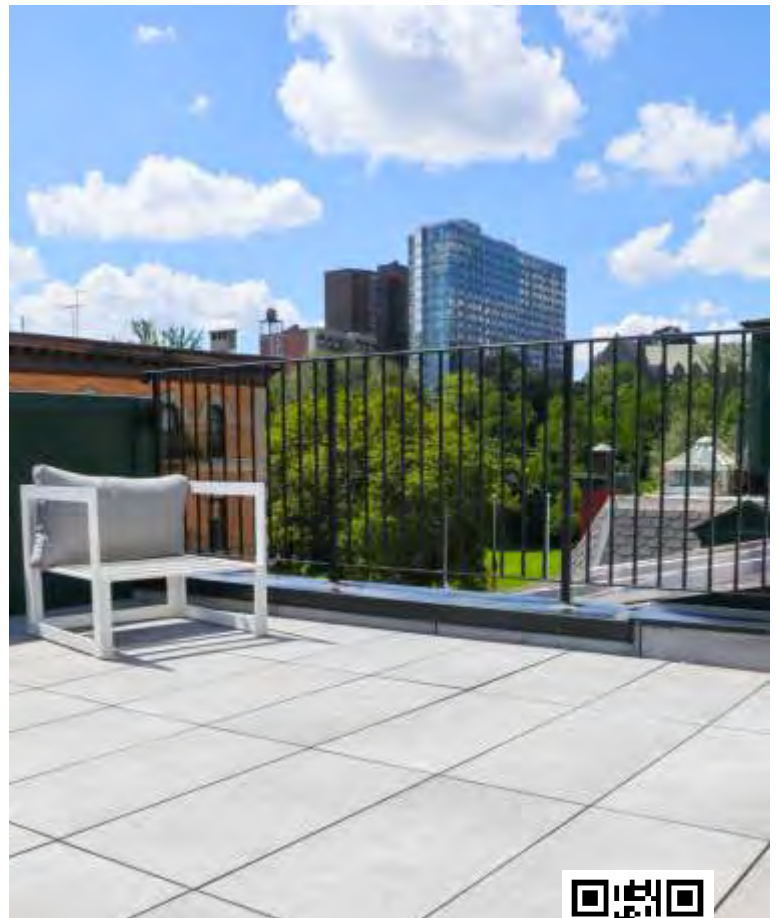
Support for outdoor terraces with any kind of material: timber decking, stone, ceramic, composite material, metal, fiberglass grid ... Can be placed on any stable substrate, also over insulation panels.

**SLOPE CORRECTOR FROM 0%-5% :**

Slope correctors could compensate ground fall 0%-5%, making ideal levelling surface. It is assembled on the bottom of pedestals. Clients could choose to use it or not with different installing condition.

**FIX COLLAR:** Fix and lock height after adjustment, increase stability

**SHIM:** Anti-slip, reduce impact, absorb shock, compensate floor thickness difference.



Scan for pedestal installation process video

# RISE-IT



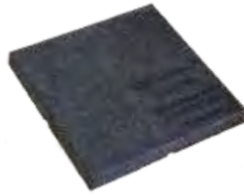
Rise-it 1/2"



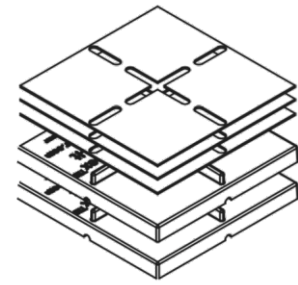
Rise-it Shim 1/16"



Rise-it 1/8"



Rise-it Flat Top



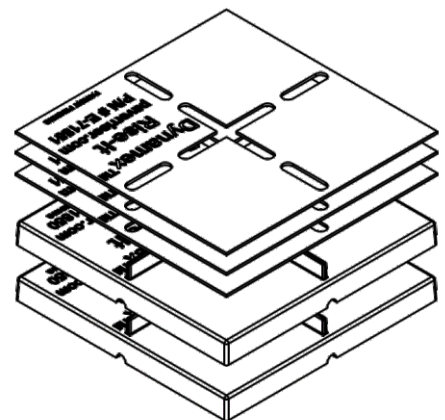
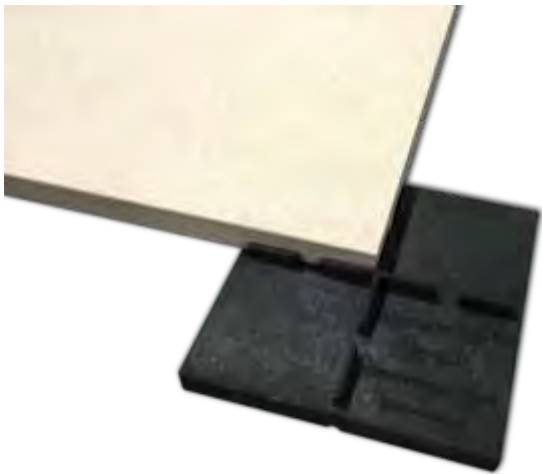
Risers can be stacked 3 pcs high with an elevation of 1/2" increments. Up to 4 shims can be used in conjunction in 1/16" increments for optimal levelling.

## APPLICATIONS:

- ROOFTOPS
- TERRACES & DECKS
- PATIOS
- BALCONIES, VERANDAS & PORCHES
- AROUND SWIMMING POOLS
- BETTER THERMAL INSULATION

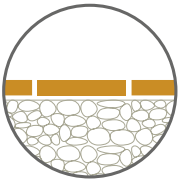


# RISE-IT





# DRY INSTALLATION ON GRAVEL



THIS TYPE OF INSTALLATION IS RECOMMENDED FOR WALKABLE FLOORS.

PORCELAIN 2CM PAVER IS INSTALLED ON THE SUBSTRATE WITHOUT USING ADHESIVES OR FILLERS, THEREBY

CREATING WALKWAYS THAT CAN BE WALKED ON IMMEDIATELY. INTEGRATED AND ENVIRONMENTALLY-FRIENDLY.

INSTALLATION ON GRAVEL HAS THE ADVANTAGE OF ALLOWING THE DRAINAGE OF RAINWATER.

## INSTALLATION INSTRUCTIONS

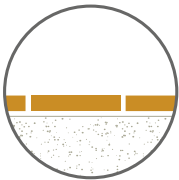
- ∞ LEVEL THE GRAVEL
- ∞ POSITION THE TILE
- ∞ USE CROSS SPACERS







# DRY INSTALLATION ON SAND



INSTALLATION ON SAND IS PARTICULARLY SUITABLE FOR BEACHES AND LIDOS (ESPECIALLY IN LIGHT COLOURS).



## INSTALLATION INSTRUCTIONS

∞ LEVEL THE SAND

∞ POSITION THE TILE

∞ USE CROSS SPACERS

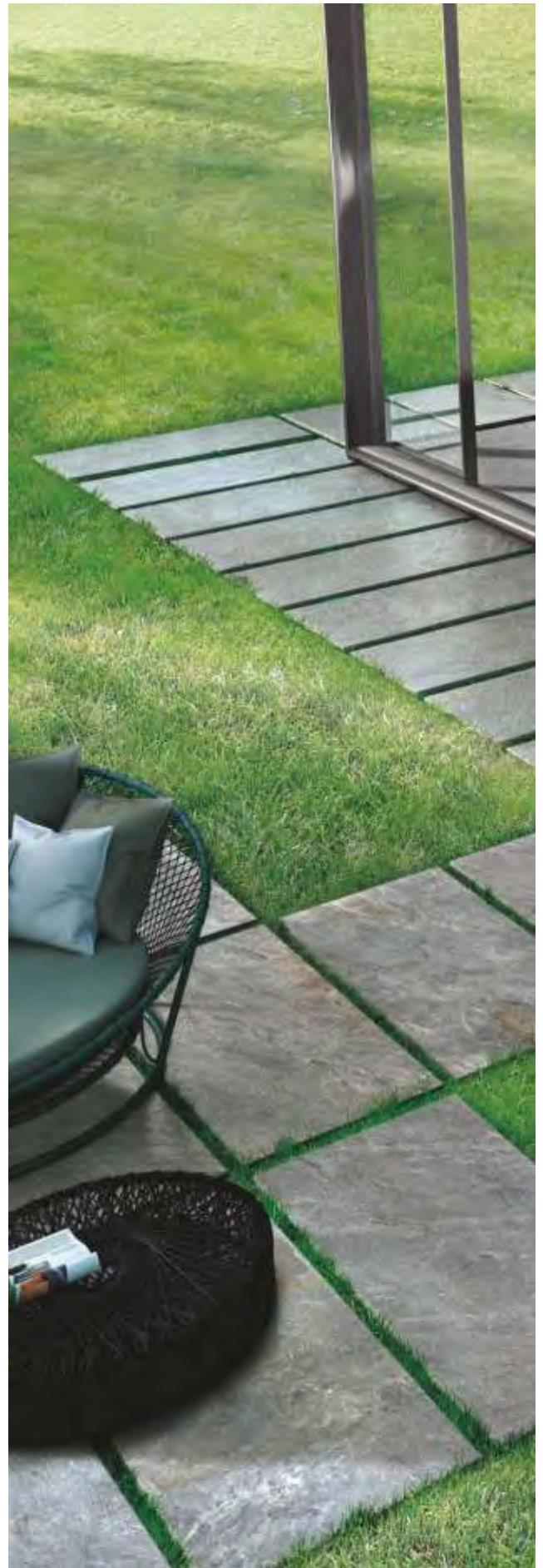




# DRY INSTALLATION ON GRASS

## INSTALLATION INSTRUCTIONS

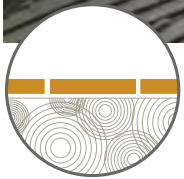
- ∞ LAY THE TILES BY SPACING THEM DEPENDING ON THE DESIRED AESTHETIC EFFECT AND REMOVE THE GRASSY SURFACE
- ∞ SPILL THE GRAVEL AND SAND STABILISER TO IMPROVE THE TIGHTNESS OF THE SUBSTRATE
- ∞ POSITION THE TILE







# TRADITIONAL INSTALLATION ON SCREEDS \*



THE EXTRAORDINARY RESISTANCE OF THIS 20 MM FINE PORCELAIN

STONEWARE MEANS PORCELAIN 2CM PAVER, LAID WITH

THE TRADITIONAL TECHNIQUE ON SCREEDS, IS THE IDEAL

SOLUTION ALSO FOR PAVING DRIVEWAYS.

## INSTALLATION INSTRUCTIONS

- ∞ SPREAD THE ADHESIVE EVENLY USING THE DOUBLE COATING TECHNIQUE (BOTH ON THE SUBSTRATE AND ON THE BACK OF THE TILE)
- ∞ POSITION THE TILE
- ∞ USE CROSS SPACERS (5 MM JOINTS)
- ∞ GROUT THE FLOOR
- ∞ CLEAN THE SURFACE THOROUGHLY



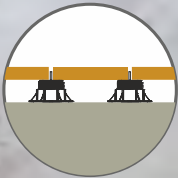
PLEASE CHECK THE SUPPORT CAPACITY AND QUALITY OF THE LAYING SURFACE BEFORE INSTALLING THE TILES. LASTLY, A MINIMUM SLOPE IS ADVISED OF 1.5%.

THIS TYPE OF INSTALLATION REQUIRES OPTIMAL COPLANARITY OF THE SCREED, DOUBLE LAYER OF ADHESIVE, AND 5 MM JOINTS BETWEEN THE SLABS.





## RAISED INSTALLATION ON SUPPORT



PORCELAIN 2CM PAVER IS THE PERFECT SOLUTION FOR OUTDOOR FLOATING INSTALLATIONS OVER 3 DIFFERENT TYPES OF POLYPROPYLENE LOAD BEARING SUBSTRATES.

THESE TILES ARE QUICK AND EASY TO INSTALL AND REMOVE AND CAN BE WALKED ON IMMEDIATELY.

### INSTALLATION INSTRUCTIONS

- ∞ YOU ARE ADVISED TO CHECK THE SUPPORT CAPACITY AND QUALITY OF THE LAYING SURFACE BEFORE INSTALLING THE TILES. A MINIMUM SLOPE IS ADVISED OF 1.5%
- ∞ LAY THE TILES ON THE SUPPORTS PREVIOUSLY ARRANGED
- ∞ CHECK THE COPLANARITY AND LEVELLING OF THE SURFACE
- ∞ USE THE ADJUSTMENT KEY IF NECESSARY





IN STOCK  
**LIGHT GREY**





# CUSTOM COPINGS & DRAINS

## CUSTOM FABRICATION IN TWO WEEKS IN NEW JERSEY



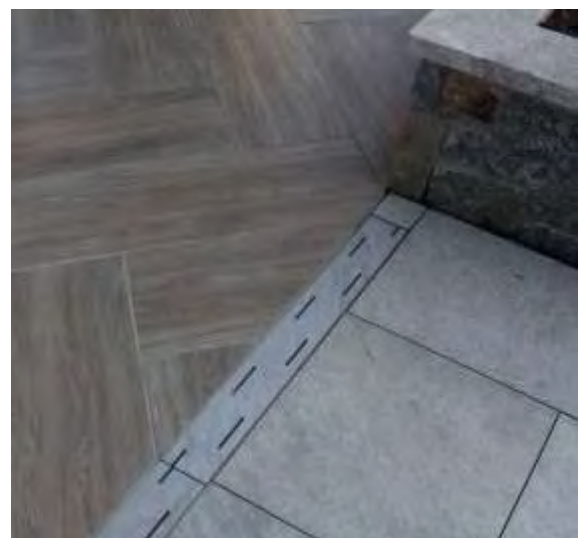
Single Bullnose Coping Project



Double Bullnose Coping Project



Mitered steps and custom drains





# OUTDOOR PORCELAIN PAVER CLEANING GUIDE

TYPE OF STAIN	SOLUTION	DETERGENTS	MANUFACTURER
<b>INORGANIC STAINS</b>			
Cement Carbon Calcium Efflorescence Chalk Metallic residues Rust Cement-based grout Colored grout Wall paint	Acid	<b>DETERGENT WITH AN ACID BASIS *</b>	
		<b>DETERDEK</b> or similar	UNITED STATES > Fila Chemicals USA, Corp. 10800 N.W. 21st Street #170 Miami, FL 33172 USA Tel. +1-305-513-0708 email filausa@filasolutions.com
		<b>KERANET</b> (liquid) or similar	MAPEI Americas Headquarters 1144 E. Newport Center Drive Deerfield Beach, Florida 33442
<b>ORGANIC STAINS</b>			
Coca Cola Ice Cream Coffee Wine Beer Animal fats Vegetable fats Mustard Mayonnaise Ketchup Jam Linseed oil Lipstick Wax	Alkaline and neutral	<b>LIMITED FOAM TYPE PRODUCT **</b>	
		<b>PS87</b> or similar	UNITED STATES > Fila Chemicals USA, Corp. 10800 N.W. 21st Street #170 Miami, FL 33172 USA Tel. +1-305-513-0708 email filausa@filasolutions.com
		<b>FILACLEANER</b> or similar	UNITED STATES > Fila Chemicals USA, Corp. 10800 N.W. 21st Street #170 Miami, FL 33172 USA Tel. +1-305-513-0708 email filausa@filasolutions.com
		<b>Ammonium</b>	Universal
RESIDUAL RINGS of organic nature	Saline solution	Sodium hypochloride (bleach for white laundry)	Universal
Silicone oils Machine Oil Resins and glazes Coal and natural rubber Encres et feutres		<b>FILASOLV</b> or similar	UNITED STATES > Fila Chemicals USA, Corp. 10800 N.W. 21st Street #170 Miami, FL 33172 USA Tel. +1-305-513-0708 email filausa@filasolutions.com
		<b>Aceton</b>	Universal
		<b>NITRO - THINNER</b>	Universal
		<b>TURPENTINE</b>	Universal
		<b>TRICHLORETHYLENE</b>	Universal
		<b>CIF AMMONIACAL</b>	Universal
		<b>HAND CLEANSER</b>	Universal
Tire		<b>Ice+scraper</b>	
Silicone and chewin-gum		<b>Ice+scraper</b>	

N.B. When using the above products, the instructions on the package should be followed.

\* **Detergent with an acid base:** a detergent with an acid basis, specifically recommended after bath floor or wall installation, for the decalcificant cleaning and the regular maintenance.

\*\* **Limited foam type product:** a limited foam type product degreasing and general cleaning, suitable for all types of stains but especially for remove of vegetable and animals fats.



# THE STANDARD

TO DATE, THERE ARE NO STANDARDS RELATING TO RAISED OUTDOOR FLOORING.  
 THE ONLY STANDARD THAT CAN ACT AS A REFERENCE IS UNI EN 12825, WHICH SPECIFIES THE FEATURES AND PERFORMANCE REQUIREMENTS OF RAISED FLOORINGS MAINLY INTENDED TO USED INSIDE BUILDINGS.  
 PORCELAIN 2CM PAVER MEETS THE REQUIREMENTS OF THIS STANDARD (LISTED IN THE FOLLOWING TABLE).  
 WITH REGARD TO THE "DYNAMIC LOAD - SHOCK-PROOF TEST AGAINST HARD BODIES", WE RECOMMEND CHOOSING THE MATERIAL ACCORDING TO THE INTENDED USE AND USING STRUCTURES THAT ARE MAXIMUM 100 MM HIGH.

Type of tests	Test result
Static load - Load test on the element	Test passed
Vertical loading test on column	Test passed, as declared by the support supplier
Permanent deformation test on the element	Test passed
Dynamic load - Shock-proof against hard bodies	Test not passed
Dynamic load - Shock-proof against soft bodies	Test passed
Length of the panel sides	Test passed
Panel orthogonality	Test passed
Straightness of the sides	Test passed
Panel thickness	Test passed
Panel warpage	Test passed
Vertical bending of the panels	Test passed

## FINE PORCELAIN STONEWARE

	Technical features	Reference standard or testing method	Value required according to standards	Assessed value
Dimensions and quality of the surface	Length and width (acceptable deviation (%) of the average size of each tile from the manufactured W size)	UNI EN ISO 10545-2	± 0,6 % (± 2,0 mm)	Compliant
	Thickness		± 5 % (± 0,5 mm)	
	Straightness of the edges		± 0,5 % (± 1,5 mm)	Compliant
	Orthogonality		± 0,5 % (± 2,0 mm)	Compliant
	Planarity		± 0,5 % (± 2,0 mm)	
	Surface quality		Minimum 95% of the tested tiles must be free from visible defects	Compliant
Physical properties	Mass of water absorbed	UNI EN ISO 10545-3	Eb ≤ 0,5 %	≤ 0,1 %
	Breaking strength (S) – Flexural resistance (R)	UNI EN ISO 10545-4	S > 1300 N R > 35 N/mm <sup>2</sup>	> 10000 N > 45 N/mm <sup>2</sup>
	Resistance to frost	UNI EN ISO 10545-12	Request	Compliant
	Deep abrasion resistance	UNI EN ISO 10545-6	≤ 175 mm <sup>3</sup>	Compliant
	Resistance to thermal shocks	UNI EN ISO 10545-9	Available test method	Compliant
	Coefficient of linear thermal dilation	UNI EN ISO 10545-8	Available test method	Compliant
Chemical properties	Resistance to chemical products	UNI EN ISO 10545-13	They must not show relevant signs of chemical attacks	Compliant
	Stain resistance	UNI EN ISO 10545-14	Minimum class 3	Compliant
Safety	Coefficient of kinetic friction	ANSI A 137.1 - DCOF	Wet > 0,42	> 0,42
		B.C.R.A.	D.M. μ>0,4	>0,4
	Classification non-slip	DIN 51130	Depending on the workplace or work area	R11
		DIN 51097	Depending on the wet areas subject to barefoot traffic	A+B+C

With the exception of special pieces and decors



**PORCELAIN PAVERS PACKAGING INFORMATION**

Group Name	Product Name	Product Size	Quantity In Crate/sq ft	Quantity In Crate/pcs	Weight of Crate/lbs	Dimensions of Crate
<b>20x40</b>	Alpine, Dark, Desert, Dust, Moon, Sand, Silver, Smokey, Sunset, White, Mars, Fossil, Mineral	20"x40"x3/4"	233,3	42 (1pc in a box)	2150	L42"xD42"xH26"
<b>24x24</b>	Rustic White, Soft Cream Pietra Grey, Rustic Grigio Pocono, Forge	24"x24"x3/4"	240	60 (2 pcs in a box)	2.160	L47"xD32"xH30"
	Ash, Coal, Metal, Sandstone	24"x24"x3/4"	240	60 (2 pcs in a box)	2.160	L47"xD31"xH29"
	Caramel, Honey Milk, Storm	24"x24"x3/4"	256	64 (2 pcs in a box)	2.300	L45"xD45"xH29"
	Light Grey, Dark Grey, Bluestone	24"x24"x3/4"	256	64 (2 pcs in a box)	2.300	L45"xD45"xH29"
	Philly Grey, Philly Taupe Philly White, Philly Beige	24"x24"x3/4"	256	64 (2 pcs in a box)	2.300	L48"xD32"xH30"
<b>Wood Look</b>	Carpino, Rovere Impero, Rovere Sabbia	8"x48"x3/4"	213	80 (2 pcs in a box)	1.920	L48"xD32"xH28"
		16"x48"x3/4"	256	48 (1 pc in a box)	2.304	L51"xD43"xH20"
<b>Cement Look</b>	Antracite, Avorio Grigio, Inox	32"x32"x3/4"	284,5	40 (1 pc in a box)	2.560	L47"xD37"xH37"
<b>Modular Pattern 4 Sizes</b>	Ash, Coal Metal, Sandstone	12"x24"x3/4"	240	120 (3 pcs in a box)	2.160	L47"xD31"xH29"
		18"x18"x3/4"	243	108 (3 pcs in a box)	2.200	L47"xD39"xH23"
		18"x36"x3/4"	243	54 (2 pcs in a box)	2.200	L47"xD39"xH23"
		24"x24"x3/4"	240	60 (2 pcs in a box)	2.160	L47"xD31"xH29"
<b>24x36</b>	Terrazzo Grigio Terrazzo Noce Terrazzo Bianco	24"x36"x3/4"	300	50 (1 pc in a box)	2.700	L48"xD26"xH28"
	Light Grey, Dark Grey, Bluestone	24"x36"x3/4"	288	48 (1pc in a box)	2.600	L36"xD48"xH22"
<b>Antiqued Wave Edge</b>	Quarzite Mix, Belgisch Granit	16"x32"x3/4"	192	54 (2 pcs in a box)	1.750	L47"xD32"xH21"
<b>Modular Pattern 3 Sizes</b>	Light Grey, Dark Grey, Caramel, Honey, Milk, Storm, Bluestone	12"x24"x3/4"	252	14 Sets	2.200	L48"xD38"xH32"
		24"x24"x3/4"				
		24"x36"x3/4"				
<b>24"x48"</b>	Light Grey, Dark Grey, Milk, Honey, Storm, Caramel, Slate, Taupe, Romantic White, Romantic Beige, Romantic Grey	24"x48"x3/4"	256	32 (1 pc in a box)	2.304	L48"xD26"xH24"
	Philly Grey, Philly Taupe Philly White, Philly Beige	24"x48"x3/4"	208	26 (1 pc in a box)	2.000	L48"xD32"xH30"
<b>24"x72"</b>	Light Grey, Dark Grey	24"x72"x3/4"	264	22 (1 pc in a box)	2.400	L72"xD36"xH24"
<b>Driveway-Sidewalk</b>	Oriente, Quarzite	9"x9"x3/4"	248	440 (11 pcs in a box)	2.250	L48"xD32"xH20"
		9"x18"x3/4"	225	200 (5 pcs in a box)	2.050	L48"xD32"xH20"
<b>48"x48"</b>	Volcano Grey, Volcano Black, Aspen White, Antique Sand, Antique Grey, Antique Earth	48"x48"x3/4"	288	18 (1 pc in a box)	2.600	L48"xD48"xH20"
<b>Porcelain Veneer</b>	Avorio, Beige, Brown, Grigio	8"x24"x3/8"	579	448 (7 pcs in a box)	2.381	L47"xD32"xH30"
	Avorio, Beige, Brown, Grigio	<b>Corner</b> 8"x24"x3/8"	sold by pcs	40 (7 pcs in a box)		
<b>Porcelain Ledger</b>	Taupe, Beige, White, Grey, Dark	6"x24"x3/8"	528	528 (11 pcs in a box)	1.958	L47"xD32"xH30"
		<b>Corner</b> 6"x(8"+4")x3/8"	sold by pcs	48 (6 pcs in a box)		
<b>3cm</b>	Bluestone Dark, Bluestone Grey, Pietra Barge	16"x32"x1 1/4"	192	54	2.656	L50"xD32"xH22"
<b>Coping</b>	Dark/Light Grey (Mitered Edge)	12"x72"x2" overhang	180	30 pcs	1.920	L72"xD36"xH22"
	Milk/Honey (1 side bullnose & 1 side eased edge)	13"x24"x3/4"	130	60 pcs (2 pcs in a box)	1.300	L42"xD31"xH25"

Open Crate Charge: \$50



**PACKAGING DETAILS**



Scan to visit our  
YouTube channel

